




1. Intended use / product description

Material: PP (polypropylene)
Medium: Potable water

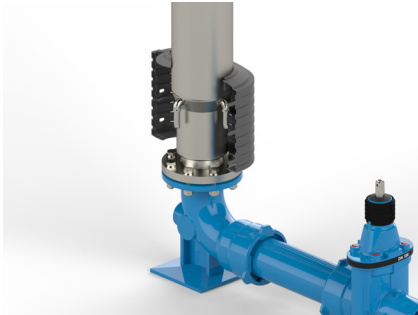
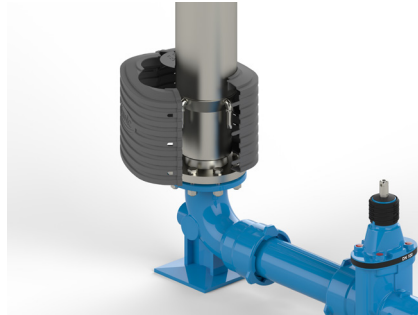
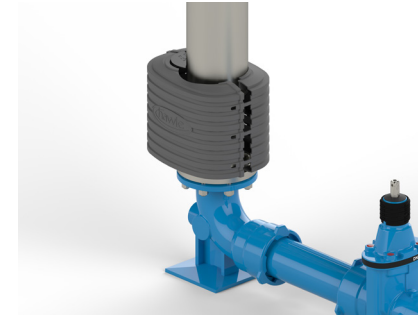
Drainage element 490-03		Drainage element 494-01		Drainage element 519-01	
Ord.No. 490 080 0600		Ord.No. 494 080 0600		Ord.No. 518 000 0400	
for		for		for	
Freeflow underground hydrant	490-00	Freeflow underground hydrant height adjustable	494-00	R1 above ground hydrant DN100	516-00
				R1 above ground hydrant with drop jacket	518-00
Tele-hydrant	492-00			Ord.No. 519 000 0600	
				for	
				H4 above ground hydrant	514-00 515-00 519-00
				Above ground hydrant with drop jacket	517-00
					
Both halves are designed identical to prevent confusing the „right“ and „left“ half. Installation possible in both positions.		Installation possible in only one position.		Installation possible in only one position.	

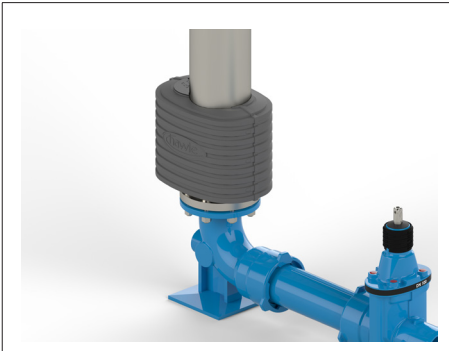
The drainage elements for Hawle hydrants serve the purpose of receiving and slowly draining the residual water accumulating during closing. Moreover, the drainage elements protect the drainage opening from roots growing in. For the purpose of quick and easy installation, the drainage element is divided in two parts.

For installation, assembly, and maintenance, the applicable standards and regulations, accident prevention regulations, as well as the trade associations' provisions shall be observed and complied with.

The drainage element shall be installed, assembled, and maintained by skilled personnel only.

2. Installation

		
Put one half of the drainage element onto the lower part of the hydrant.	Clip in the second half on one side using the snap locks.	Make sure that the drainage element is firmly seated on the lower part of the hydrant!



Let both parts finally click into place by pressing the snap locks.

Note:

Sample images with above ground hydrant.

For installation on underground hydrants, the same steps are carried out. Installation on the above ground hydrant is performed analogously to installation on the underground hydrant, but one opening is closed at delivery.

Before filling, the drainage element should be covered evenly with filling material capable of drainage (grain size at least 5 mm). During filling, make sure that the drainage element is firmly seated!

In case of extremely cohesive soils (loam) we recommend additionally wrapping the drainage element in fleece Ord. No. 490 080 0500.

3. Servicing and maintenance

The Drainage element is maintenance-free.

4. Commissioning and pressure-testing

On commissioning the hydrant, the drainage function has to be tested.

If you have any other questions or if you need more information please contact:

Hawle Armaturen GmbH Application Engineering
Liegnitzer Str. 6
83395 Freilassing
Phone: +49 8654 6303-0
Telefax: +49 8654 6303-222
E-Mail: info@hawle.de
Web: www.hawle.de